

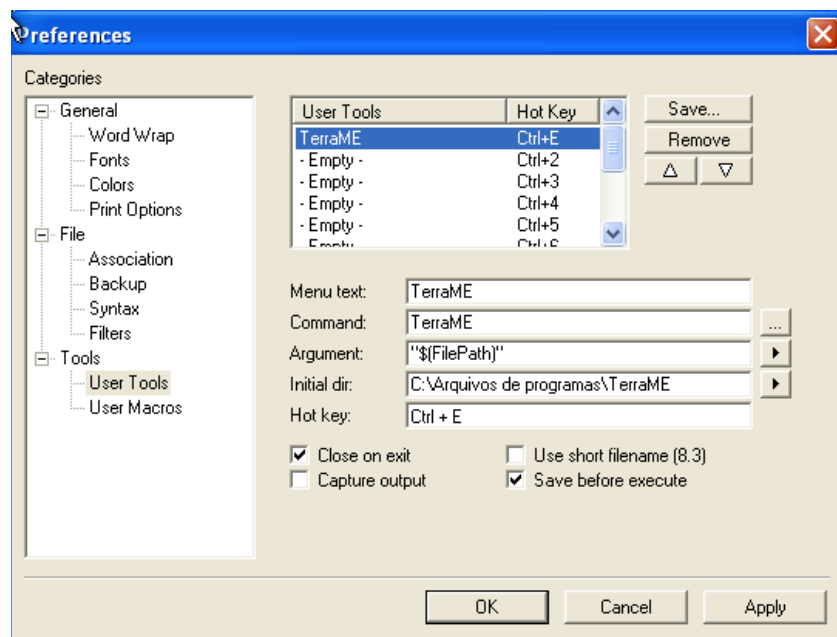
Configuring Crimson Editor for Using TerraME

30 June 2012

Execute the following steps within Crimson Editor. In “Tools” menu select “Conf. user tolls”. In “Preferences” dialogue box select “User tolls” (in the left side). Fill the slots below:

- *Menu text:* any name, for example TerraME;
- *Command:* search TerraME software location as the command to be executed (for example, C:\Program Files\TerraME\TerraME.exe), preferably using the button “...” in the right side;
- *Argument:* fill with "\${FilePath}" (with the quotation marks);
- *Initial Dir:* search TerraME directory (for example, C:\Program Files\TerraME), preferably using the button in the right side;
- *Hot Key:* use the keyboard to create a shortcut to your run the model (for example, Ctrl + E).
- *Capture output:* select this option to show the result within Crimson itself **only if you are not going to use Observer.**

This configuration can be seen in the figure below:



Finally, type “Ok” to finish the configuration.